

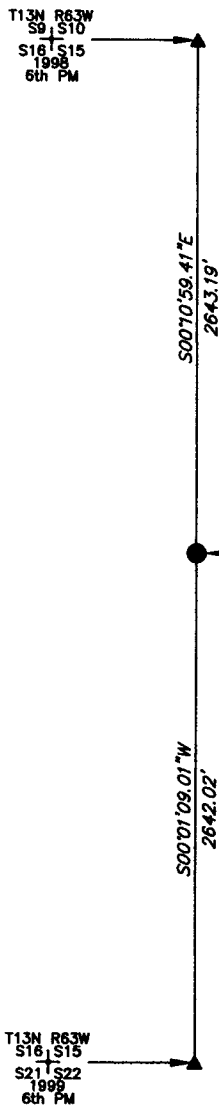
State of Wyoming Corner Record

CORNER PERPETUATION AND FILING ACT.

Regulations of the Board of Registration for Professional Engineers and Land Surveyors.)

Reverse side of this form may be used if more space is needed.

Record of original survey and citation of source of historic information (if corner is lost or obliterated). Description of corner monumentation evidence found and/or monument and accessories established to perpetuate the location of this corner. Sketch of relative location of monument, accessories, and reference points with course and distance to adjacent corner(s) (if determined in this survey). Method and rationale for reestablishment of lost or obliterated corner.



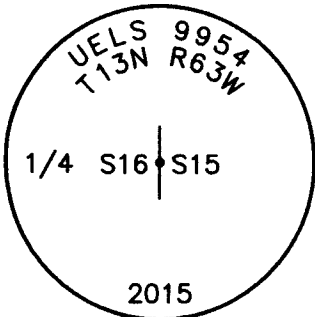
NOTE:
LINES SHOWN ARE BETWEEN MONUMENTS AND MAY OR MAY NOT BE SECTION OR SECTION SUBDIVISION LINES.

SET MONUMENT AT THE LOCATION OF THIS 1/4 CORNER OF MAXIMUM CONTROL WHICH IS A 2.5" PRIVATE ALUMINUM CAP ON A 3/4" REBAR, FLUSH WITH THE GROUND & 0.8' EAST OF A FENCE LINE.

THE MONUMENT IS FOR:
T13N R63W 1/4 S16 | S15 2015 6th PM



SCALE 1"=1000'
(EXCEPT IN TRIVIAL CASES)
BEARINGS ARE RELATED TO WGS 84 WITH GPS OBSERVATIONS
DRAWN BY: SM
P.C. G. WEIMER
COUNTY: LARAMIE



CORNER MONUMENT SYMBOLS

- RECORD IS FOR THIS CORNER MONUMENT.
- ▲ A RELATED CORNER OR WC MONUMENT.

THE MONUMENT IS MARKED

Date of Field Work: 05/29/2015 Office Reference: _____

CROSS INDEX DIAGRAM

1 2 3 4 5 6 7 8 9 10 11 12 13 14 15 16 17 18 19 20 21 22 23 24 25																											
A																										A	
B																										B	
C	6		5		4		3		2		1															C	
D																											D
E																											E
F																											F
G	7		8		9		10		11		12																G
H																											H
J																											J
K																											K
L	18		17		16		15		14		13																L
M																											M
N																											N
O																											O
P	19		20		21		22		23		24																P
Q																											Q
R																											R
S																											S
T	30		29		28		27		26		25																T
U																											U
V																											V
W																											W
X	31		32		33		34		35		36																X
Y																											Y
Z																											Z
1 2 3 4 5 6 7 8 9 10 11 12 13 14 15 16 17 18 19 20 21 22 23 24 25																											

Firm/Agency, Address

UELS, LLC

85 South 200 East

Vernal, Utah 84078

Telephone Number: 435-789-1017

This corner record was prepared by me or under my direction and supervision.

SEAL & SIGNATURE



RECP #: 670095

RECORDED 9/22/2015 AT 10:41 AM BK# 2465 PG# 103
Debra K. Lathrop, CLERK OF LARAMIE COUNTY, WY PAGE 1 OF 1